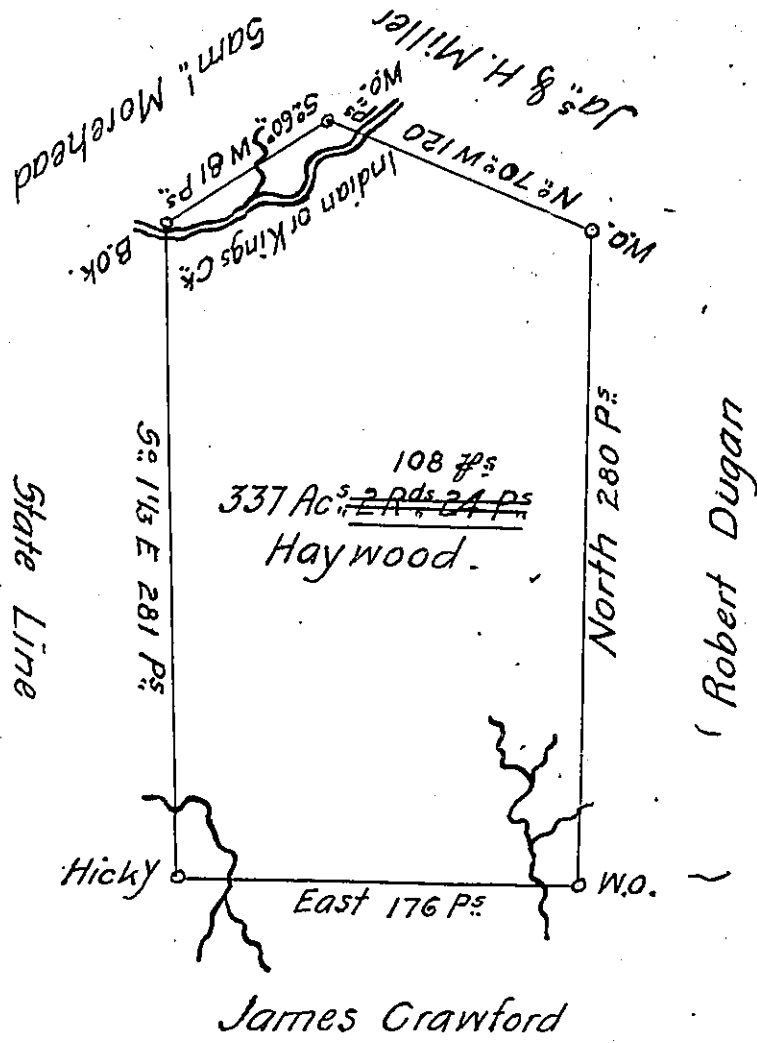


✓  
Hanover -  
BEAVER  
✓



A Draught of a Survey called "Haywood" situate on Kings Creek  
 in Washington County, containing 337 Ac.<sup>108 P.</sup> ~~2 Rds. 24 P.~~ and the usual allow-  
 -ance for Roads &c. executed Novem<sup>r</sup>. y<sup>e</sup> 19<sup>th</sup> 1785 in Pursuance of a Warrant  
 granted to William Rowley for 300 Ac.<sup>s</sup> dated the 4<sup>th</sup> March 1785.

Presley Nevill }  
 Matt<sup>y</sup>. Ritchie } D.S.<sup>s</sup>

Dan<sup>l</sup>. Brodhead Esq<sup>r</sup>. S Gen<sup>l</sup>.

IN TESTIMONY that the above is a copy of the original remaining on file in  
 the Department of Internal Affairs of Pennsylvania, made  
 conformably to an Act of Assembly approved the 16th day of  
 February, 1833, I have hereunto set my Hand and caused  
 the Seal of said Department to be affixed at Harrisburg,  
 this thirteenth day of August 1906

*Isaac R. Brown*  
 Secretary of Internal Affairs.